

SCENARIO

- Two-vehicle collision. Low speed, side impact at a T-Junction
- Both vehicles are on their wheels
- Driver of vehicle 'B' has suffered a cardiac arrest. There are no other passengers in the vehicle
- Driver of vehicle 'A' has no injuries and self-extricated from the vehicle



EQUIPMENT

- Stabilisation equipment, medical equipment and rescue board
- 1 Scrap car
- 1 prop vehicle or alternative
- 1 Live casualty or training dummy



SCENARIO PREPARATION

- Two vehicles, both on four wheels, glass intact.
- A casualty is in the driver's seat of vehicle 'B'. Vehicle 'B' positioned with an off-centre side impact of vehicle 'A'. Block access to the driver's door of vehicle 'A'
- Access to all doors on both vehicles
- The engine is off, hand-brake off, still in gear
- Props – paracetamol



INJURIES

Driver 'A' – Vehicle 'A'

- Major - None
- Minor - None
- Illness / Condition - None

Driver 'B' – Vehicle 'B'

- Major – Cardiac arrest
- Minor - None
- Illness / Condition – Heart bypass



SIGNS AND SYMPTOMS

Casualty 'A'

- Casualty responsive and alert
- Pulse Rate = 90
- Respiratory Rate = 22

Casualty 'B'

- No response
- Agonal breathing
- Peripheral cyanosis
- Pulse Rate = 0
- Respiratory Rate = 0



HEALTH AND SAFETY

- Weather conditions
- Ground conditions and vehicle movements
- Manual handling
- Housekeeping
- Scrap vehicle and its content
- Live casualties (if used)



Purpose

- Initial or refresher training
- Practising the Six Phases of Extrication - Basic scenario, two vehicle road traffic collision
- Casualty assessment and response



KEY CONSIDERATIONS

- Assess the outer and inner cordons, mechanism of injury
- Set up equipment area
- Stabilise the vehicle
- Access to casualty and their assessment
- Vehicle survey – inner and outer – Dynamic risk assessment
- Safe systems of work
- Information gathering and planning
- Access to the casualty
- Extrication pathway



KEY ACTIONS

- Assess the outer and inner cordons, mechanism of injury
- Set up equipment area
- Stabilise the vehicle
- Access to casualty and assessment of their condition
- Information gathering and planning
- Rapid extrication and CPR/defib



Debrief

- Situation
- How it went
- Address concerns
- Review learning points





SCENARIO ACTION CARD 2.1

Level of
Difficult
Basic

- Plan ahead



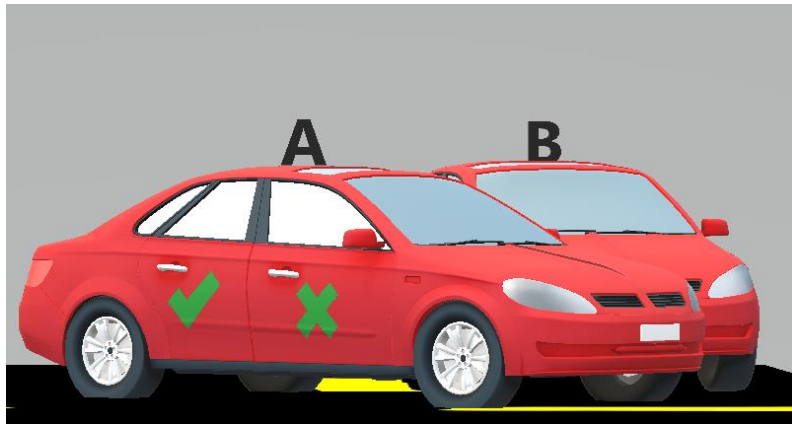
SCENARIO ACTION CARD 2.1

Level of Difficulty

Basic



Six Phases of an Extrication – Scenario – Visual Aide



No access, forced entry required	Access available	Door locked
----------------------------------	------------------	-------------