

## SCENARIO

- A single vehicle has lost control, rolled and collided with a tree, whilst travelling on a 'B' road, at speed
- The vehicle on its roof
- The vehicle has a single occupant who is not restrained by their seatbelt



## EQUIPMENT

- Stabilisation equipment, glass management tools, hydraulic rescue tools, hand tools, medical equipment and rescue board
- 1 scrap car
- 1 Live casualty or training dummy



## SCENARIO PREPARATION

- A single vehicle on its roof
- The glass is intact, no access is available to either front door
- A single casualty has fallen from the driver seat during the collision, they positioned with their head and upper body towards the driver's front door
- The engine is off, hand-brake off, still in gear
- Prop – Tree (or blocking prop)



## INJURIES

- Major – Spinal injury
- Minor – Broken ankle
- Illness / Condition – Stable condition



## SIGNS AND SYMPTOMS

- Casualty non-responsive
- Pale and clammy
- Pulse Rate = 115
- Respiratory Rate = 20
- Pins and needles in their legs
- Excessive pain from upper back area



## HEALTH AND SAFETY

- Weather conditions
- Ground conditions and vehicle movements
- Manual handling
- Housekeeping
- Scrap vehicle and its content
- Live casualties (if used)



## Purpose

- Initial or refresher training
- Practising the Six Phases of Extrication - Basic scenario, single vehicle road traffic collision
- Casualty assessment and handling



## KEY CONSIDERATIONS

- Scene and vehicle safety
- Scene approach
- The stabilisation of the vehicle
- Access to the casualty
- Extrication pathway
- Control of extrication



## KEY ACTIONS

- Assess the outer and inner cordons, mechanism of injury
- Set up equipment area
- Stabilise the vehicle
- Access to casualty and their assessment
- Vehicle survey – inner and outer – Dynamic risk assessment
- Safe systems of work
- Information gathering and planning
- Access and Space Creation
- Spinal management and control of movements



## Debrief

- Situation
- How it went
- Address concerns
- Review learning points



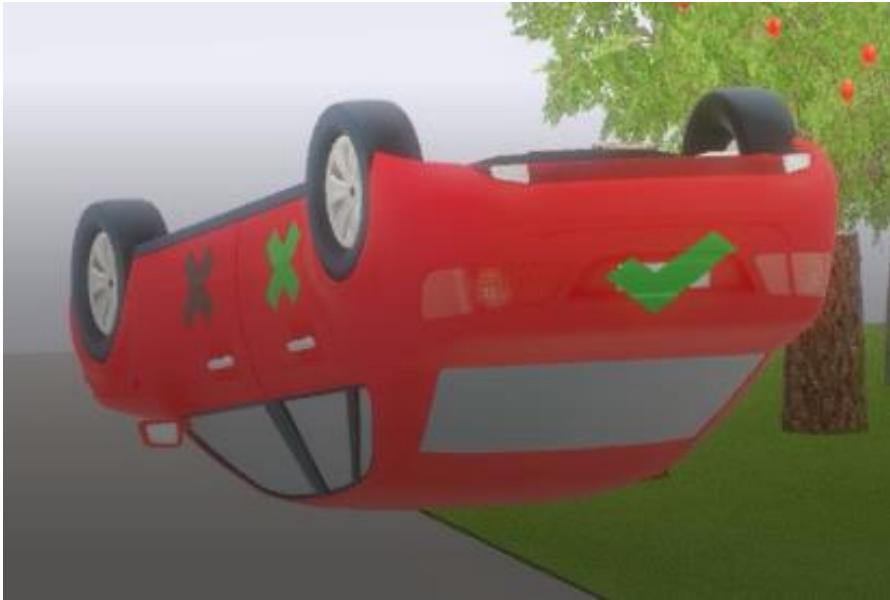


# SCENARIO ACTION CARD 3.2

Level of  
Difficulty  
Standard

- Plan ahead

Six Phases of an Extrication – Scenario – Visual Aide



✘	No access, forced entry required	✓	Access available	✘	Door locked
---	----------------------------------	---	------------------	---	-------------